

WIDE FLYING CAM UNITS FOR PIERCE

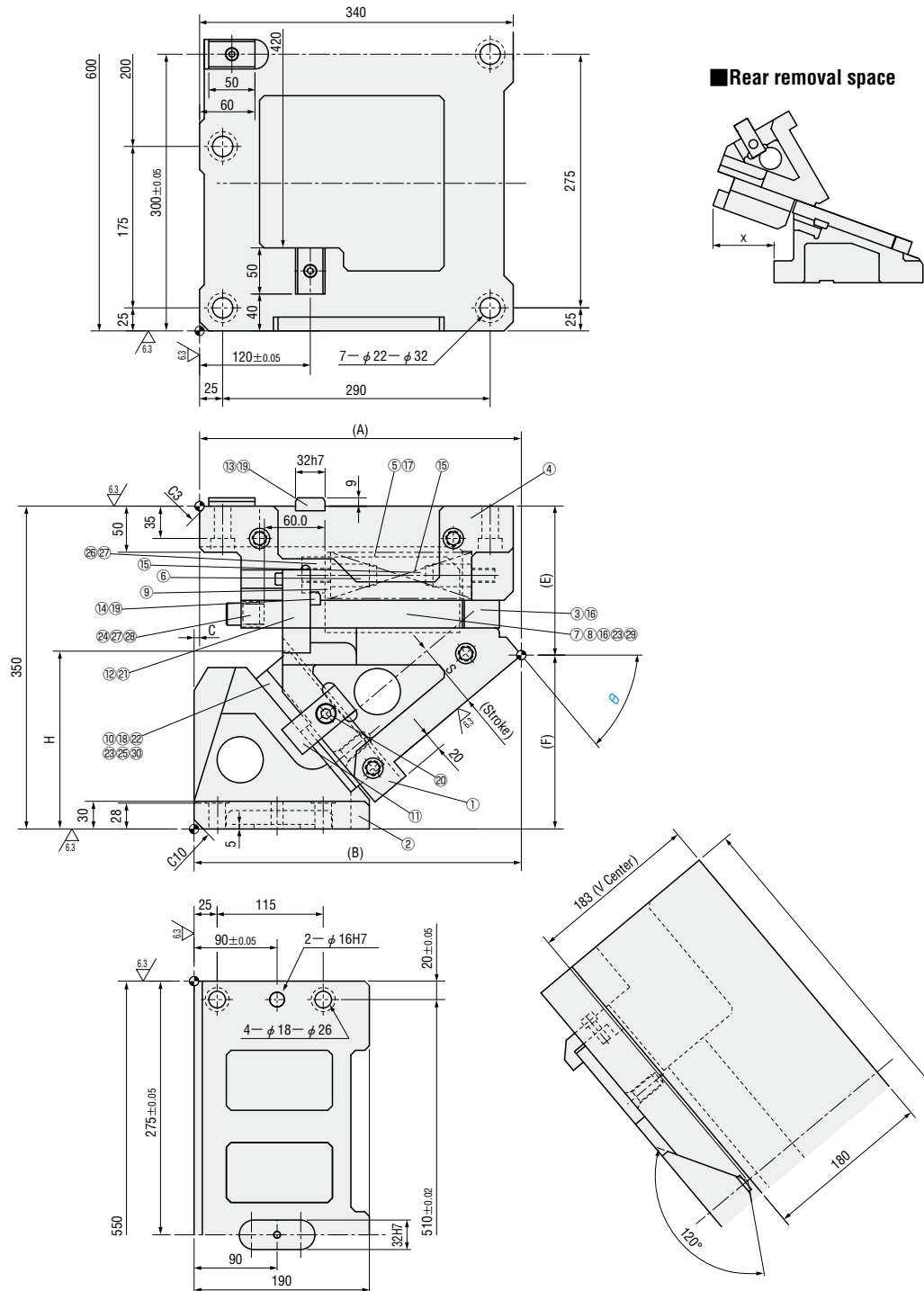
— MGFVW · MEVWN —

CAM DIAGRAM

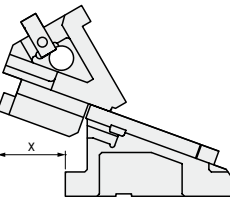
P.1211

— With automatic alignment —
MGFVW600 ($\theta=50-60$)

— Without automatic alignment —
MEVWN600 ($\theta=50-60$)
(Economy type)



■ Rear removal space



■ Components table P.1213

W	θ	A	B	C	E	F	H	x
600	50	348.77	354.77	6	161.49	188.51	192.8	126
	60	332.75	377.75	45	195.83	154.17	202.1	152

Slide Stroke S	Working force KN (tonf)		Spring load N (kgf)			Total weight kg	Catalog No.	W	θ
	Standard working force	Max. working force	Preload	5mm before bottom dead center	Max. load				
93.3	392.3 (40.0)	783.6 (79.9)	3269 (333.3)	18741 (1911.1)	19613 (1999.9)	283.5	— With automatic alignment — MGFVW	600	50
120.0				18932 (1930.5)					— Without automatic alignment — MEVWN (Economy type)

Order —
MGFVW 600 — 50

Days to Ship **Quotation**

Price **Quotation**

Alterations — — (N · K · FK)
MGFVW 600 — 50 — K

Alterations	Code	Spec.
	N	Add dowel hole Add 2 φ 16H7 dowel holes on cam holder
	K	Add locating key (With 1 hexagon socket head cap screw M8×15)
	FK	Move key position Move forward the locating key on cam holder.