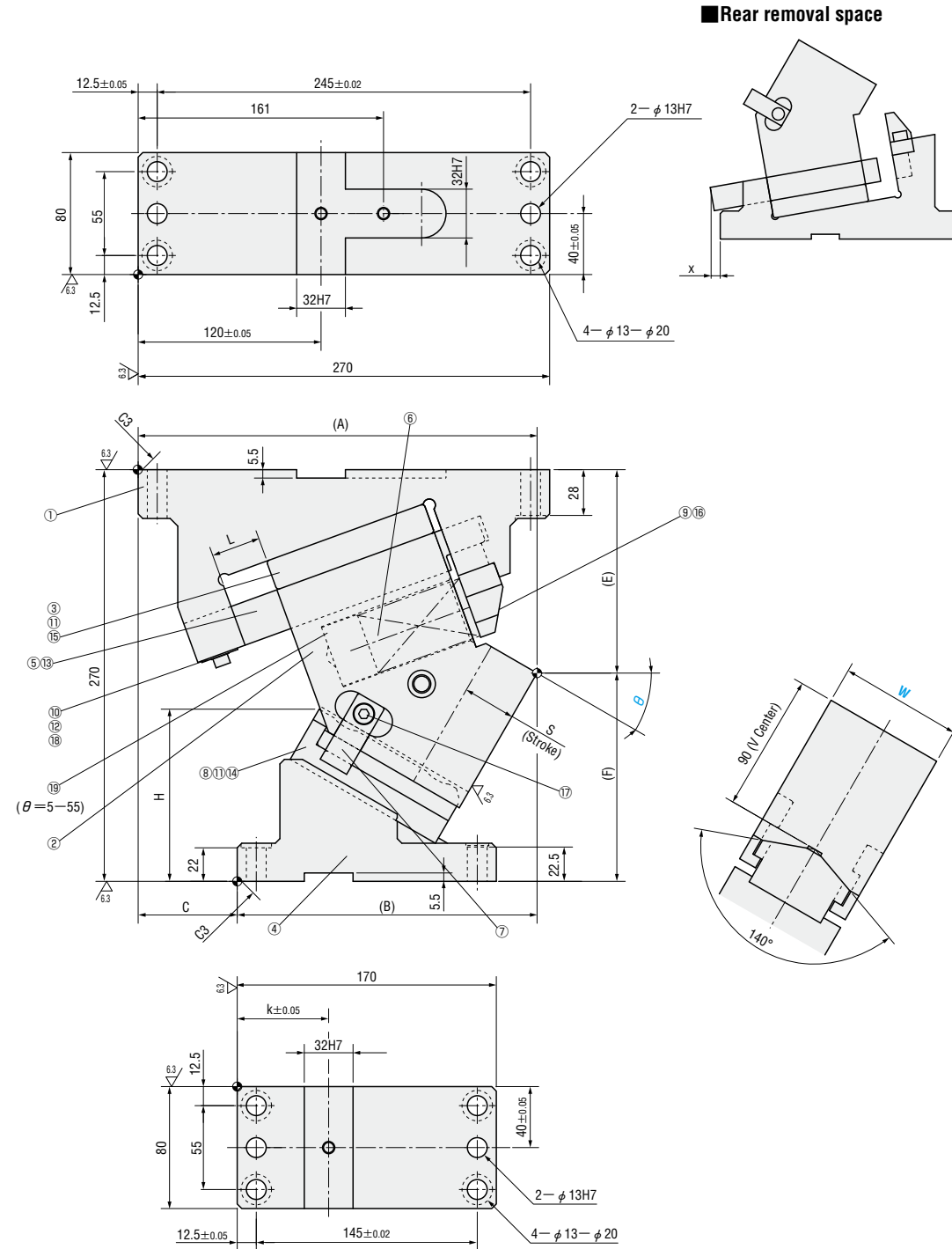


RIGID FLYING CAM UNITS

— MGFL · MEFL —

MGFL80 ($\theta=00-55$)
MEFL80 ($\theta=00-55$)

(Economy type)



Components table P.1287

W	θ	A	B	C	E	F	H	L	k	x
80	00	277	142	135	110	160	68	47	65	0
	05	278.32	153.32	125	115.67	154.33	72.4	43		
	10	274.54	164.54	110	117.32	152.68	81.5	40		
	15	277.58	172.58	105	119.95	150.05	90.2	35		
	20	273.34	178.34	95	123.52	146.48	98.3	32	60	
	25	268.75	188.75	80	128.03	141.97	105.9	31		
	30	261.73	196.73	65	133.42	136.58	112.9	30	50	7
	35	258.2	203.2	55	139.66	130.34	119.2	30		0
	40	245.09	210.09	35	146.7	123.3	124.8	31	60	10
	45	245.34	215.34	30	154.49	115.51	129.7	30		5
50	225.87	220.87	5	162.97	107.03	133.7	31	60	5	
55	229.64	229.64	0	172.07	97.93	136.9	31			

Slide Stroke S	Working force KN (tonf)		Spring load N (kgf)			Total weight kg	Catalog No.	W	θ
	Standard working force	Max. working force	Preload	5mm before bottom dead center	Max. load				
30.2	49.0 (5.0)	98.1 (10.0)	296(30.2)	1586(161.7)	1842(187.9)	34.0	MGFL MEFL (Economy type)	80	00
30.5			324(33.0)	1620(165.2)	1872(190.9)	32.0			05
31.1			432(44.1)	1642(167.4)	1914(195.2)	32.0			10
33.9			392(39.9)	1660(169.2)		32.0			15
32.3				1679(171.2)		32.0			20
35.0				1697(173.0)		30.0			25
34.7				1714(174.8)		30.0			30
37.7				1731(176.5)		30.0			35
39.9				1744(177.9)		29.0			40
43.7				1762(179.6)		29.0			45
46.7	1775(181.0)	30.0		50					
53.8	1788(182.3)	30.0		55					

Order Catalog No. **MGFL** W **80** - θ **05**

Days to Ship **Quotation**

Price **Quotation**

Alterations Catalog No. **MGFL** W **80** - θ **30** - (N12 · K · KA) **N12**

Alterations	Code	Spec.
	N12	Change dowel hole diameter φ13H7 → φ12H7
	K	Add 3 locating keys (With 3 hexagon socket head cap screw M8×15)
	KA	Add 3 stepped locating keys (With 3 hexagon socket head cap screw M8×15)