

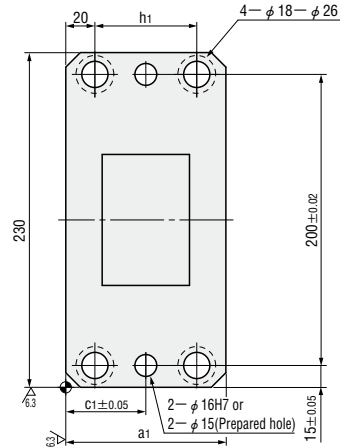
# STANDARD UNDER CAM UNITS — DRILLED DOWEL HOLES / FINISHED DOWEL HOLES—

— MGDC · MGDC A · MEDC · MEDCA —

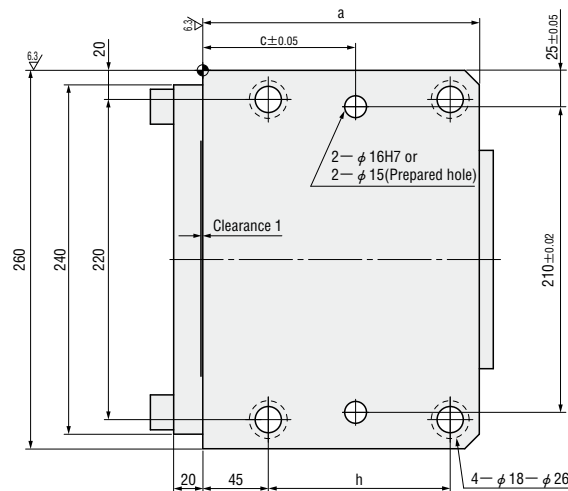
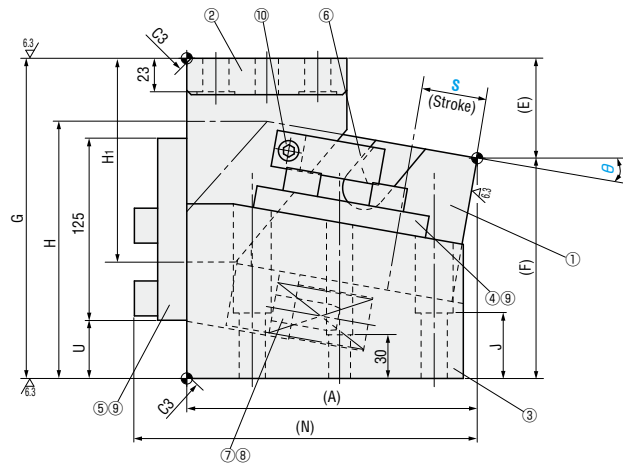
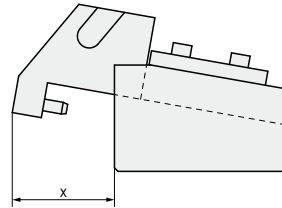


— Drilled dowel holes —  
**MGDC150 ( $\theta=05-20$ )**  
**MEDC150 ( $\theta=05-20$ )**  
 (Economy type)

— Finished dowel holes —  
**MGDCA150 ( $\theta=05-20$ )**  
**MEDCA150 ( $\theta=05-20$ )**  
 (Economy type)



■ Rear removal space



■ Components table P.1335

W	$\theta$	S	A	E	F	G	H	H <sub>1</sub>	J	N	U	a	a <sub>1</sub>	c	c <sub>1</sub>	h	h <sub>1</sub>	x
150	05	45	193.01	61.5	158.5	220	170.2	145	45	229.01	40	190	110	105	55	125	70	115
		70	217.92	53.68	166.32		180.6	170		253.92		200	130	120	65	135	90	103
	10	45	199.55	68.64	151.36		176.7	140		235.55		190	110	105	55	125	70	121
		70	224.17	67.98	152.02		180.5	170		260.17		200	130	120	65	135	90	110
	15	45	204.58	76.29	143.71		179.6	130		240.58		190	120	105	60	125	80	126
		70	228.73	77.76	152.24		230	194.6		155		60	264.73	55	200	140	120	70
	20	45	208.05	84.3	135.7	220	183.2	130	45	244.05	40	190	120	105	60	125	80	113
		70	231.54	92.85	137.15	230	193.2	155	60	267.54	55	200	140	120	70	135	100	

Standard working force	Working force KN (tonf)		Spring load N (kgf)			Total weight kg	Catalog No.	W	$\theta$	Slide Stroke S	
	Standard working force	Max. working force	Preload	5mm before bottom dead center	Max. load						
64.7 (6.6)	98.1 (10.0)		431 (44.0)	1663 (169.6)	1817 (185.3)	62.0	— Drilled dowel holes — <b>MGDC</b> <b>MEDC</b> (Economy type) — Finished dowel holes — <b>MGDCA</b> <b>MEDCA</b> (Economy type)	150		05	45
			308 (31.4)	1738 (177.2)	1848 (188.4)	73.0					70
			431 (44.0)	1663 (169.6)	1817 (185.3)	63.0				10	45
			308 (31.4)	1738 (177.2)	1848 (188.4)	73.0					70
			431 (44.0)	1663 (169.6)	1817 (185.3)	65.0				15	45
			308 (31.4)	1738 (177.2)	1848 (188.4)	77.0					70
			431 (44.0)	1663 (169.6)	1817 (185.3)	66.0				20	45
			308 (31.4)	1738 (177.2)	1848 (188.4)	75.0					70

Order **Catalog No.** **MGDCA** **150** -  **$\theta$**  **20** - **S** **45**

Days to Ship **Quotation**

Price **Quotation**