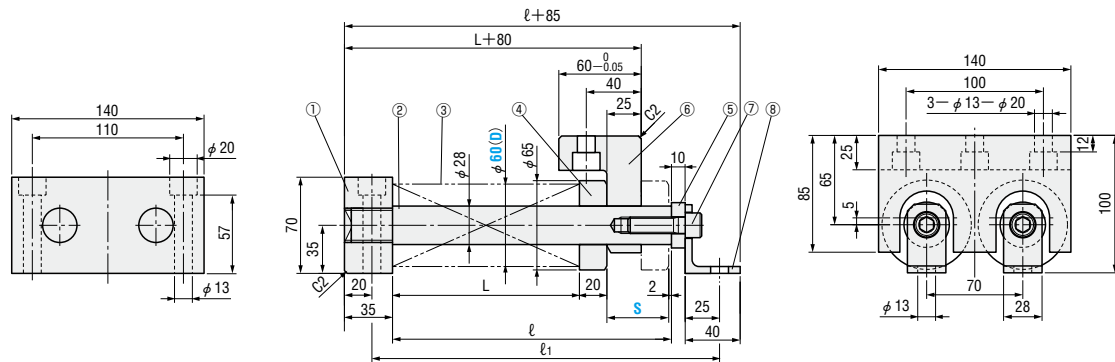


# RETURNING UNITS FOR CAM SLIDER PARALLEL TYPE

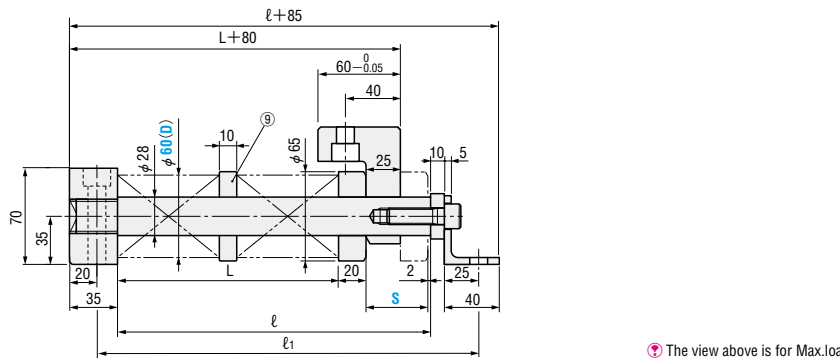


CUSWL 60  
CUSWM 60

● Coil spring one-step type



● Coil spring two-step type



Ⓜ The view above is for Max.load.

### Table of Components

No.	Name	Quantity	Material, Remarks	No.	Name	Quantity	Material, Remarks
①	Fixed plate	1	SS400	⑥	Slide angle	1	SS400
②	Guide pin	2	S45C 55HRC~	⑦	Hexagon socket head cap screw	2	SCM435 M12×40
③	Coil spring	2(4)	Refer to the specifications table.	⑧	Support angle	2	SS400
④	Separate disk	2	FC250	⑨	Washer	2	FC250
⑤	Pressure disk	2	SS400				

Coil spring		Load N(kgf)		L		ℓ	ℓ <sub>1</sub>	Catalog No.	(D)	S			
Catalog No.	Number of steps	Preload	Max.load	At preload	At Max.load								
SWL 60-100	1	2856 (291.2)	7780 (793.3)	88	68	110	160	CUSWL	60	20			
SWL 60-125	1	2862 (291.8)		110	85	132	182			25			
SWL 60-150	1	2862 (291.8)		132	102	154	204			30			
SWL 60-150	1	2067 (210.8)		137	102	159	209			35			
SWL 60-175	1	2179 (222.2)		159	119	181	231			40			
SWL 60-200	1	2265 (230.9)		181	136	203	253			45			
SWL 60-250	1	2862 (291.8)		220	170	242	292			50			
SWL 60-250	1	2385 (243.2)		225	170	247	297			55			
SWL 60-300	1	2866 (292.2)		264	204	286	336			60			
SWL 60-300	1	2468 (251.6)		269	204	291	341			65			
SWL 60-300	1	2070 (211.0)		274	204	296	346			70			
SWM60-125	1	4224 (430.7)		11280 (1150.2)	113	93	135			185	CUSWM	60	20
SWM60-150	1	4116 (419.7)			136	111	158			208			25
SWM60-200	1	4620 (471.1)			179	149	201			251			30
SWM60-225	1	4312 (439.7)	203		168	225	275	35					
SWM60-250	1	4234 (431.7)	226		186	248	298	40					
SWM60-300	1	4557 (464.7)	269		224	291	341	45					
SWM60-350	1	4914 (501.1)	311		261	333	383	50					
SWM60-350	1	4284 (436.8)	316		261	338	388	55					
SWM60-200	2	5720 (583.3)	358		298	380	430	60					
SWM60-200	2	5170 (527.2)	363		298	385	435	65					
SWM60-225	2	5488 (559.6)	404	334	426	476	70						

Order **Catalog No.** (D) - S  
 CUSWL 60 - 50  
 CUSWM 60 - 50

Days to Ship **Quotation**

Price **Quotation**