

# LIFTING EYE BOLTS / CAST-IN LIFTING BOLTS

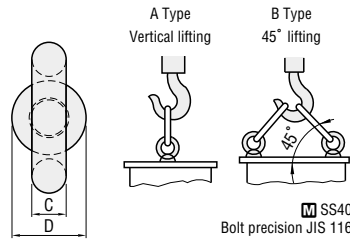
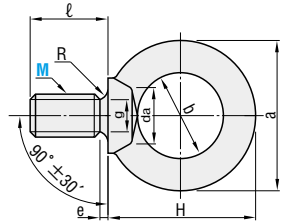
# HOOKS

—BOLT TYPE / LARGE HEAD BOLT TYPE—

Lifting eye bolts —For vertical lifting—

RoHS

CHI



SS400  
Bolt precision JIS 1168

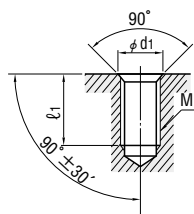
M×P	a	b	C	D	H	ℓ	e	g	R	da	Max. allowable load N (kgf)		Catalog No.	Base unit price	Volume discount unit price		
											A: Vertical, 1 bolt	B: 45°, 2 bolts			Type	M	1~19 pieces
6×1.0	24.9	14.5	5.2	12.8	28.5	15	3	4.7	1.0	7.9	392 (40)	392 (40)	CHI	1~19 pieces	20~49	50~99	100~200
8×1.25	32.6	20	6.3	16	33.3	15	3	6	1.0	9.2	785 (80)	785 (80)					
10×1.5	41	25	8	20	41.5	18	4	7.7	1.2	11.2	1471 (150)	1471 (150)					
12×1.75	50	30	10	25	51	22	5	9.4	1.4	14.2	2157 (220)	2157 (220)					
16×2.0	60	35	12.5	30	60	27	5	13	1.6	18.2	4413 (450)	4413 (450)					
20×2.5	72	40	16	35	71	30	6	16.4	2	22.4	6178 (630)	6178 (630)					
24×3.0	90	50	20	45	90	38	8	19.6	2.5	26.4	9316 (950)	9316 (950)					
30×3.5	110	60	25	60	110	45	8	25	3	33.4	14710 (1500)	14710 (1500)					
36×4.0	133	70	31.5	70	132	55	10	30.3	3	39.4	22555 (2300)	22555 (2300)					
42×4.5	151	80	35.5	80	151	65	12	35.6	3.5	45.6	33342 (3400)	33342 (3400)					
48×5.0	170	90	40	90	170	70	12	41	4	52.6	44130 (4500)	44130 (4500)					

•Load (kgf)=Load (N)×0.101972

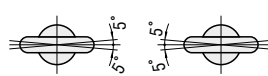
### Installation

Tighten the lifting eye bolt lightly by hand so that the seat of the bolt is firmly in contact with the plate.

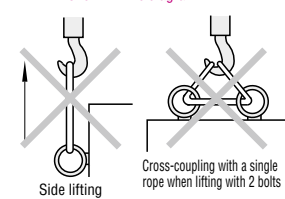
Catalog No.	d <sub>1</sub>	ℓ <sub>1</sub>
6	9	17
8	11	17
10	13	20
12	16	24
16	20	30
20	24	34
24	28	42
30	36	50
36	42	60
42	48	70
48	56	76



When 2 lifting eye bolts are used for lifting, install the bolts so that they face in the same direction.



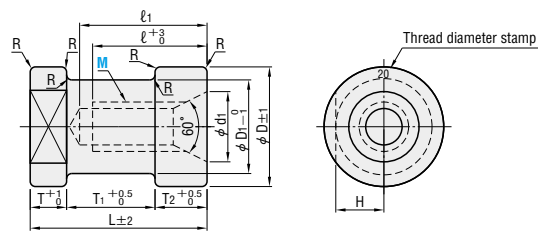
Caution  
Never attempt the types of lifting shown in the diagram.



Cast-in lifting bolts

RoHS

CSN



S35C

Lifting bolt	Max. allowable load N (kgf)	M×P	D	D <sub>1</sub>	d <sub>1</sub>	ℓ	ℓ <sub>1</sub>	L	T	T <sub>1</sub>	T <sub>2</sub>	H	R	Catalog No.		Base unit price
														Type	M	
2 bolts	3730 (380)	12×1.75	38	28	18	30	40	55	10	30	15	14	2	CSN	12	1~19 pieces
Vertical, 1 bolt	2160 (220)	16×2.0	46	36	22	35	45	55	10	30	15	18	2			
45°, 2 bolts	6620 (675)	20×2.5	48	38	28	45	55	70	15	35	20	19	2			
2 bolts	8830 (900)	24×3.0	55	45	36	55	65	85	20	45	20	22.5	2			
Vertical, 1 bolt	13340 (1360)	30×3.5	65	52	42	65	75	95	25	50	20	26	3			
45°, 2 bolts	19810 (2020)	36×4.0	85	70	48	75	90	110	30	55	25	35	3			

•Load (kgf)=Load (N)×0.101972

Order	Catalog No.
Order	CHI 10
Order	CSN 24

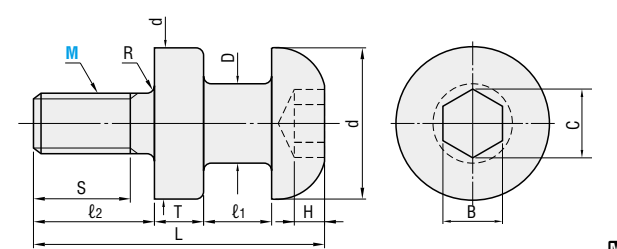
Price Quotation

Days to Ship Quotation

Example

RoHS

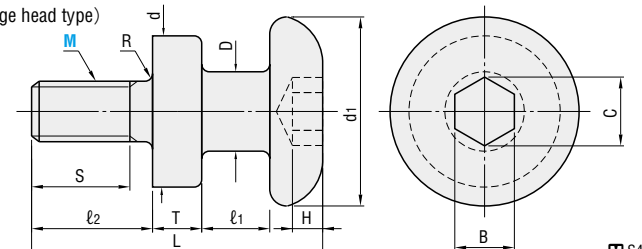
CHN



S45C  
Black oxide (Fe<sub>3</sub>O<sub>4</sub>)

RoHS

CHNL (Large head type)

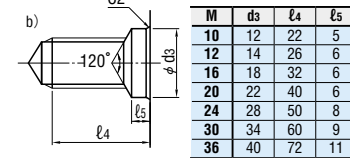
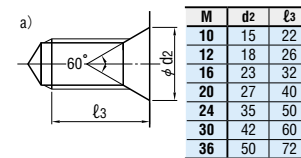


S45C  
Black oxide (Fe<sub>3</sub>O<sub>4</sub>)

M×P	D	d	d <sub>1</sub>	ℓ <sub>1</sub>		ℓ <sub>2</sub>	S	T	L		R	H	B	C	N/piece (kgf/piece) (For steel, safety factor 10)	Catalog No.			
				CHN	CHNL				CHN	CHNL						Type	M	CHN	CHNL
10×1.5	13	32	42	10	18	20	16	8	46	54	1.5	5	8	9.2	2452 (250)	CHN CHNL	10	16	20
12×1.75	16	36	48	13	20	24	20	10	57	64	1.5	6	10	11.7	3530 (360)				
16×2.0	20	40	52	18	25	30	25	13	75	82	2	9	14	16.3	6669 (680)				
20×2.5	25	48	62	20	28	37	32	16	90	98	2	12	17	19.8	10395 (1060)				
24×3.0	32	58	76	25	33	47	40	20	111	119	2.5	13	19	22.1	15004 (1530)				
30×3.5	36	68	88	30	40	56	48	22	131	141	3	16	22	25.6	23830 (2430)				
36×4.0	40	78	100	30	40	68	58	25	148	158	3	18	27	31.4	34814 (3550)				

•Load (kgf)=Load (N)×0.101972

Installation The bolt holes for installation should be machined as shown in figure a) or b) below. The head of CHN and CHNL should be in tight contact with the side surface of the die set when the bolts are used.

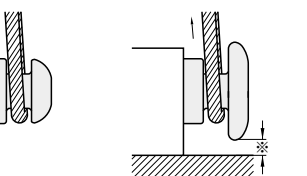


Order Catalog No. CHNL 20

Example

Days to Ship Quotation

Price Quotation



※Install so that the wire can be passed under the hook without contacting the bottom surface. <Large head type>